

# User Manual

# List

<b>1. Safety Precautions</b> -----	2-3
<b>2. Initial Installation</b> -----	4-5
<b>3. Touch POS Appearance</b> -----	6
<b>4. Product Description</b> 6	
1) 15” inch LED screen &Touch Screen Parameter-----	7-8
3) I/O port-----	9-11
<b>5. Dual screen settings</b> -----	11-14

# 1. Safety Precautions

1. Select flat and vibration free table placed the machine;
2. The location of the machine should be chosen to avoid direct sunlight; temperature changes little, away from water and dust fewer places;
3. Please keep away from strong electromagnetic fields machine;
4. To avoid block or cover the vents, to avoid any kind into or fall into the machine. Prevent fire or electric shock;
5. In the areas of poor power quality or store this machine shall be equipped with a separate power supply to power;
6. The product uses standard wall outlet with earthing poles, cannot be arbitrarily changed. Should confirm whether the outlet voltage if the voltage nameplate of the drive match;
7. Make sure the ground prong of the power plug into a power outlet or power strip grounding jack, and make sure that grounding jack really grounded. If poorly grounded or ungrounded, will result in electric shock, fire or damage to the equipment;
8. The machine is best not to start with other high-power appliances

frequently share a socket outlet should be located away from the cash register at the close and easy to swap to an emergency situation can be the fastest off the power;

9. This equipment shall be connected to a variety of cables in case of power failure to ensure that conduct, must take the screws tighten well. Plug or unplug cables;

10. Clean the machine, do not use a wet rag to wipe the body or chemicals, such as: gasoline, thinners, etc.;

11. When the machine fails, should immediately cut off the power to stop using, do not open or repair, shall promptly authorized people;

**"WARNING":** For the non-compliance with the above issues, as well as non-qualified service personnel or the use of non-designated by the Company to provide and repair parts for maintenance of all the consequences, the Company does not assume any responsibility.

## 2. Initial Installation

### 1, Unpacking

Immediately after receipt of the machine Unpacking checked and any damage to the shipping company shall immediately report the claim to the manufacturer. After unpacking also check the spare parts are complete.

### 2, Preparing for Installation

Examine the case for cleanliness, signs, marking, labeling is correct. Check the working environment: Because the cash register is a precision instrument should be checked before using the surrounding environment meets the technical specifications of the cash register, if inconsistent please do not use cash registers!

### 3, the main technical specifications

Power supply voltage: 220VAC $\sim$   $\pm$  15%

Power: 80W  $\pm$  15%

Frequency: 50—60Hz

Temperature Operating: 0 °C ~ 40 °C

Storage: -20 °C ~ +55 °C

Relative humidity 20% ~ 93% (40 °C)

#### 4, Preparing for use

1) Placed the machine, please note the cable line to ensure wires are neatly every fluent

2) Power (note: we must ensure a good power supply ground), open the machine host power switch.

3)System installation (cash registers at the factory with only DOS operating system, customers using genuine Windows operating system before installation).

4)to perform some general sales operation and check monitors, printers, cash drawers and other peripherals working properly.

### 3. Touch POS Appearance



#### **E715**

- 1、15 inch main display ( resistance touch display )
- 2、Power button
- 3、MSR
- 4、12.1/9.7 inch custom display / LED&VFD custom display
- 5、Basic machine

## 4. Product Description

### 15 inch LED display parameter

Item	Specification	Unit
Screen Diagonal	15.0	Inch
Active Area	304.128(H)×228.096(V)	mm
Pixel Pitch	0.297(V)×0.297(H)	mm
Resolution	1024×768	-
Pixel Arrangement	R.G.B. Vertical stripe	-
Display Mode	Normally White	-
White Luminance	350(Typ)	cd/m2
Contrast Ratio	800:1(Typ)450:1(Min)	-
Response Time	16	mesc
Operating Voltage	3.3V	V
Surface Treatment	Anti-glare, Hard-Coating(3H)	-
Outline Dimension	326.5(H)×253.5(V)×12(D)Typ.	Mm
Input signal	LVDS	-
Support Color	16.2M	-

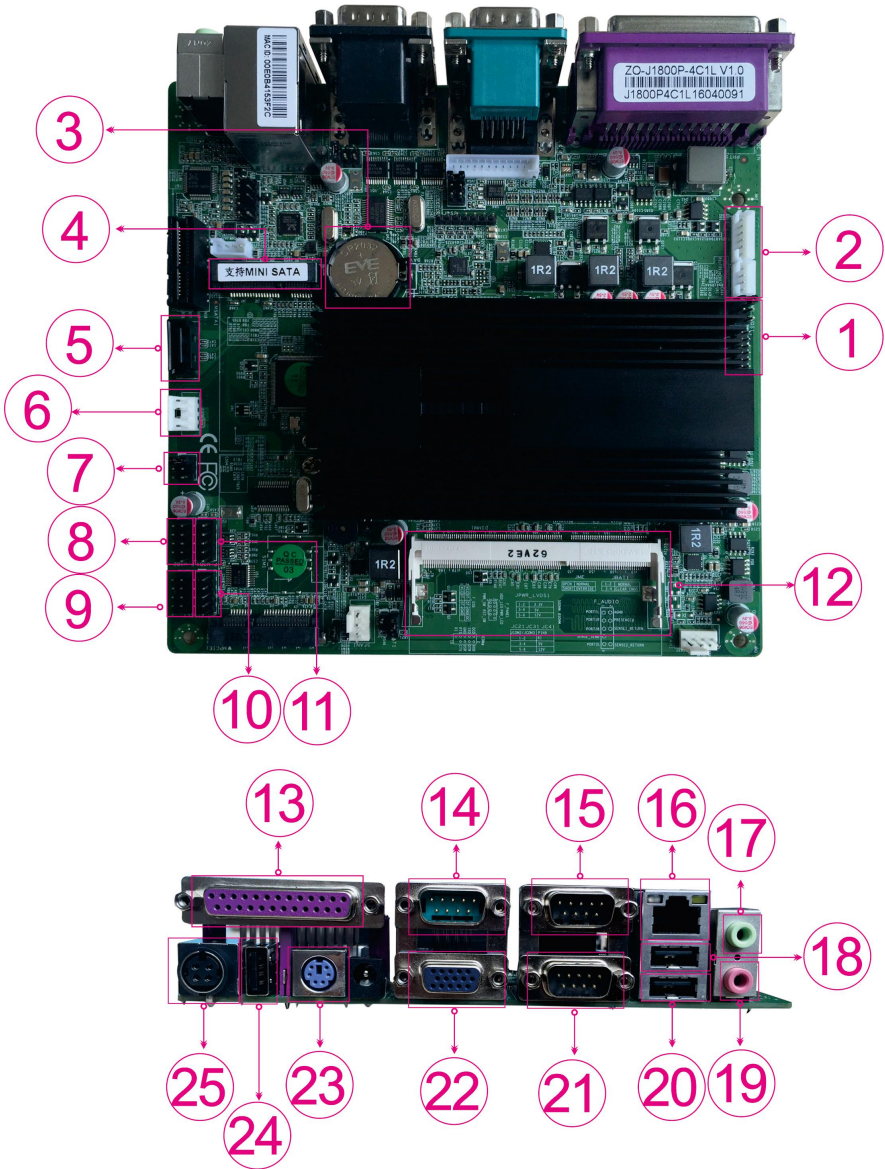


Items	Symbol	Min.	Max.	Unit	Conditions
Supply Voltage	VDD	-0.5	5	V	-
Operating Temperature	TOP	-20	70	°C	Note
Storage Temperature	TST	-30	80	°C	Note

### 15 ” inch touch screen parameter

Size	326mm x 252mm
Visual Area	304mm x 228mm (4: 3)
Resolution	1024 x 768
Refresh rate	60Hz
Dot pitch	0.297mm x 0.297mm
Resolution	4096 x 4096
color	16M
Response time	16ms

### (1) Main board & I/O Port

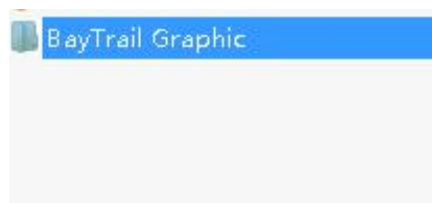
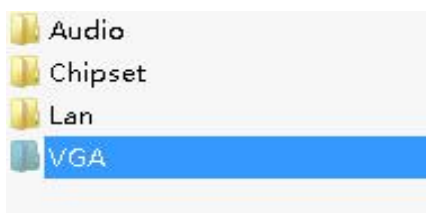


NUM	LABEL	COMPONENTS
1	LVDS	DC 12V input
2	INVTER	Display backlight port
3	BAT	Main broad clock power
4	MINISATA	Mini hard disk port
5	SATA	HDD port
6	HDD-PWR	4 pin Hard disk power-supply port
7	JC4	COM port with power choice pin
8	USB	USB port
9	COM4	COM4 port
10	F-PANEL	Turn on/off ,Hard disk indicator light
11	USB	USB port
12	SO-DIMM	Memory port
13	LPT	LPT port
14	COM1	COM1 port
15	COM2	COM2 port
16	LAN	Network port
17	AUDIO-OUT	Audio input

18	USB	USB port
19	AUDIO-IN	Audio input
20	USB	USB port
21	COM3	COM3 port
22	VGA	VGA port
23	PS/2	PS/2 keyboard or mouse
24	USB	USB port
25	DC-IN	Power input

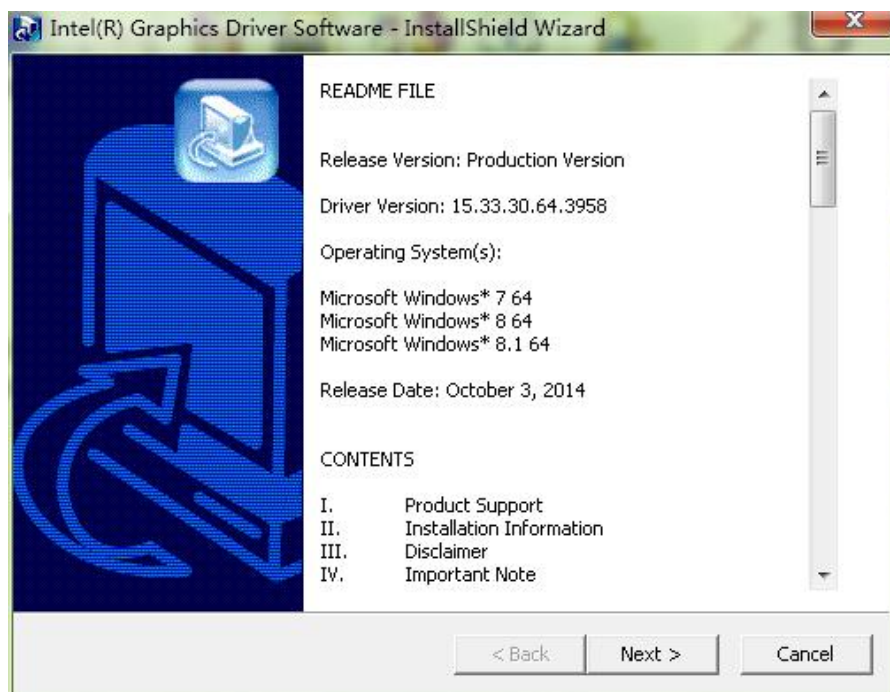
## 5. Dual screen settings

1、Open the folder in turn ,Install VGA driver. Then reboot the computer.



win732_J1900	
Framework.rar	51,620,828
win7win864_J1900_153330.exe	129,217,064
win832_J1900_153330.exe	72,052,192

DisplayAudio	2016/6/22 9:36
Graphics	2016/6/22 9:36
ICCS	2016/6/22 9:36
Lang	2016/6/22 9:36
autorun.inf	2014/2/20 4:12
DIFxAPI.dll	2006/11/2 23:21
mup.xml	2014/2/20 4:13
readme.txt	2014/3/6 10:41
<input checked="" type="checkbox"/> Setup.exe	2014/2/20 4:14
Setup.if2	2014/2/20 4:12
UsersGuide.pdf	2014/3/6 10:41



2. In the Desktop, Click the right mouse button, in turn , select "Graphics Options"- "Output To"- "Extended Desktop"- "Built-in Display +Monitor"

